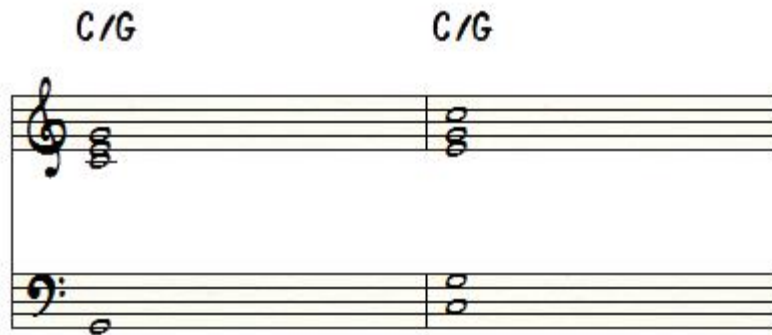


1. *Styles Series Part 8/8 – Pop/Rock*

- a. I saved the easiest style for last. The pop/rock style predominantly only involves triads when being played. There is nothing complicated about this style and you should already be pretty familiar with it by this point. A couple things to pay attention to are the use of slash chords. When you see slash chords you have the option to double the note the bass player has in your LH or you can simply play the full chord in both hands that you have above the slash chord. (see below)



Besides adding small simply rhythmic figures in with your triads, there isn't much more too it!